



MONTHLY MEMBERSHIP PROGRESS REPORT

District 13 OH3

Results as of: 2/28/2017

GMT: Cindy Gregg

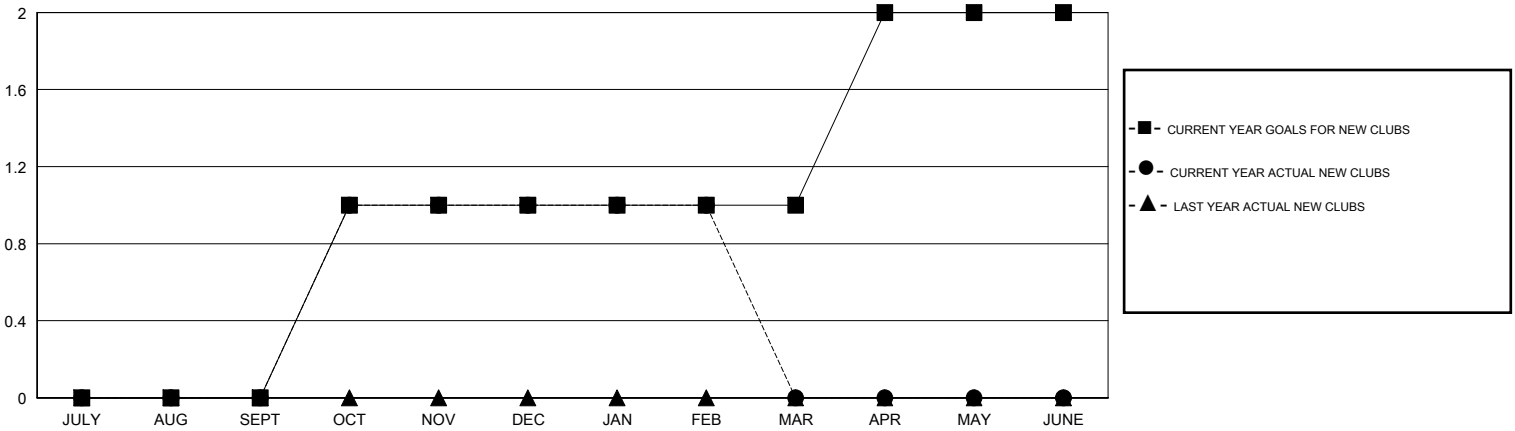
LOCATION OHIO

GMT CA

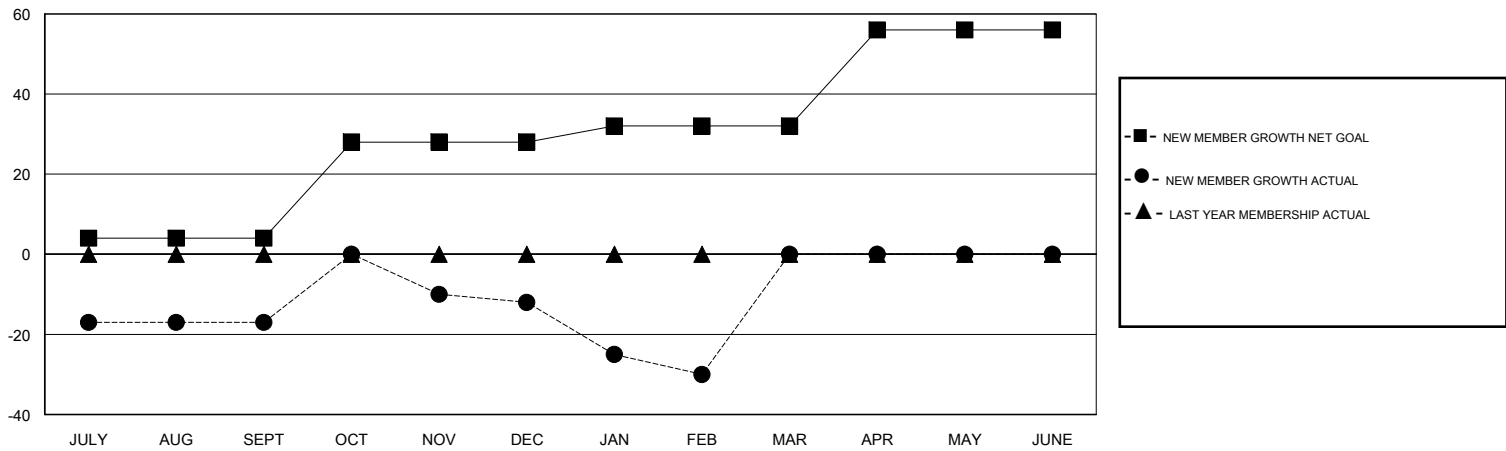
Clubs			
RESULTS FOR 2016-2017			
QUARTER	NEW CLUB GOAL	NEW CLUBS	DROPPED CLUBS
JULY/AUG/SEPT	0	0	0
OCT/NOV/DEC	1	1	0
JAN/FEB/MAR	0	0	0
APR/MAY/JUNE	1	0	0

Members			
RESULTS FOR 2016-2017			
QUARTER	NEW MEMBER GROWTH NET GOAL (not reinstated or transfers)	NEW MEMBER GROWTH ACTUAL (not reinstated or transfers)	DROPPED MEMBERS ACTUAL (including transfers)
JULY/AUG/SEPT	4	21	38
OCT/NOV/DEC	24	71	67
JAN/FEB/MAR	4	31	49
APR/MAY/JUNE	24	0	0

GOALS AND ACTUAL NEW CLUBS CUMULATIVE



GOALS AND ACTUAL MEMBERS CUMULATIVE



DROPPED CLUBS: 0	29 CLUBS OF 63 ADDED 1 OR MORE NEW MEMBERS	<u>GENDER DISTRIBUTION</u>	
DROPPED MEMBERS		MALE	1,146 (67.25%)
DECEASED	15	FEMALE	558 (32.75%)
CLUB CANCELLED	0	TOTAL FAMILY UNIT MEMBERS	315
OTHER	137	FAMILY MEMBERS PAYING HALF DUES	162
TOTAL	152		

[CLICK HERE FOR CUMULATIVE MEMBERSHIP DATA](#)